



Longhurst Lodge, Rocky Mountain Cabin

\$116,000

Address:
14762 Peak to Peak Highway Allenspark,
80510 Colorado

Bedrooms: 1

Bathrooms: 1

RARE OPPORTUNITY to own a mountain cabin on U.S. Forest Service land, minutes from Rocky Mountain National Park and recently listed on the National Register of Historic Places. Owned by one family and remarkably unaltered since 1924 when it was built by the grandparents. These properties, rapidly diminishing in number, seldom come on the market. Longhurst Lodge was recently donated to HistoriCorps® with the request that it find a preservation buyer to steward the cabin for the next many generations. Sold as is, with furnishings included. Permit includes the 1.5 car garage and other outbuildings. Secluded setting with open views, less than 30 mins from Estes Park, 45 minutes from Boulder and 1.5 hours from Denver International Airport. Become the steward of this vanishing resource and help HistoriCorps achieve its mission of engaging volunteers on the rehabilitation of historic buildings on public lands.

All inquiries to Tammy Ackerman, Rocky Mountain Property, Inc, email rockymtnproperty@aol.com or call (303) 747-1111.

MLS #: 828288

Listing Type: For Sale

Property Type: Residential

Style: Log

Lot Size (acres):

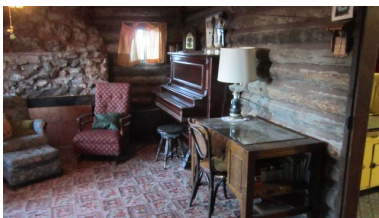
Size (square feet): 1047

Year Built: 1924

Additional Out Buildings:

Submission Date: 10-07-2017

Last Update: 10-09-2017



Agent Details:
Donald Rae
HistoriCorps
Phone Number: 7203906083
Fax:
Cell Number: 8022790193